

Post

Ref. 40 502XI

Street Furniture
Series 5000

Sineu Graff : Intelligent Design
for the town of tomorrow



➤ Presentation

Series 5000 posts are made of stainless steel and steel, which means they meet very high quality standards.

This furniture has been designed and manufactured by Sineu Graff, experts in urban landscaping, in accordance with a sustainable development approach.

➤ Description

The post has a 316L stainless steel body that has been bead-blasted and a painted aluminium cap.

The post is made of stainless steel that is cleaned, bead-blasted and passivated after manufacturing.

The cap is treated using our powder blast process (after cleaning and shot blasting, the parts are coated with a first coat of epoxy powder, and then with a second coat of polyester powder).

The cap is assembled onto the body of the post using screws and nuts.

Delivered assembled.

Weight: 7kg.

➤ Colours

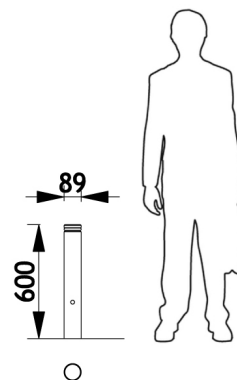
Colours shown:

Body: Stainless steel

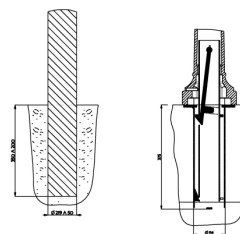
Cap: RAL 6028 Pine green

Colours to select from RAL (satin) or AKZO NOBEL (sand) charts.

➤ Dimensions



➤ Fixings device



Fixing type A

Fixing type D



LAUD
PRODUKTER

Møblering av offentlig rom



Street Furniture



SINEU GRAFF partner in Norway :

Laud Produkter AS

Salg: Rosenkrantz gt 15, 0160 Oslo

Administrasjon: Pb. 2, 4951 Risør

Org.nr: 911933500 - Telefon: 21904020

SINEU GRAFF info@sineugraff.com - www.sineugraff.com