

Post

Ref. 40 372X

Street Furniture
Series 6000

Sineu Graff : Intelligent Design
for the town of tomorrow



➤ Presentation

Series 6000 posts are made up of a steel tube with a cast iron cap. The clean lines of these pieces will make them suitable for all your settings. This furniture has been designed and manufactured by Sineu Graff, experts in urban landscaping, in accordance with a sustainable development approach.

➤ Description

The post is made up of a painted galvanized steel body with a 100x100 mm square section and a cast iron cap.

Steel parts are zinc plated, then they undergo our powder blast process (after cleaning and shot blasting, they are coated with a first coat of epoxy powder, and then with a second coat of polyester powder).

Cast-iron parts are produced in a foundry located close to our factory in France and are treated using our powder blast process (after cleaning and shot blasting, the parts are coated with a first coat of epoxy powder, and then with a second coat of polyester powder).

The cap is assembled onto the body of the post using rivets.

Delivered assembled.

Weight of post alone: 10kg.

➤ Colours

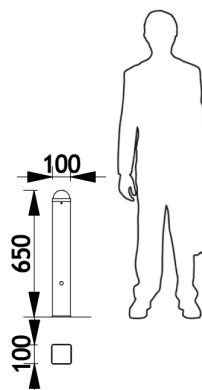
Colours shown:

Body: RAL 8002 Signal brown

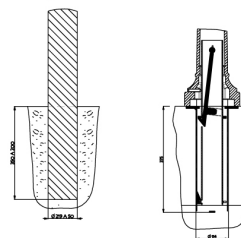
Cap: Ral 9017 Traffic black

Colours to select from RAL (satin) or AKZO NOBEL (sand) charts.

➤ Dimensions



➤ Fixings device



Fixing type A

Fixing type D



LAUD
PRODUKTER

Møblering av offentlig rom



Street Furniture



SINEU GRAFF partner in Norway :

Laud Produkter AS

Salg: Rosenkrantz gt 15, 0160 Oslo

Administrasjon: Pb. 2, 4951 Risør

Org.nr: 911933500 - Telefon: 21904020

SINEU GRAFF info@sineugraff.com - www.sineugraff.com