

# BICCleaner 2.0

## Basic cleaning operations of the bicycle washing station

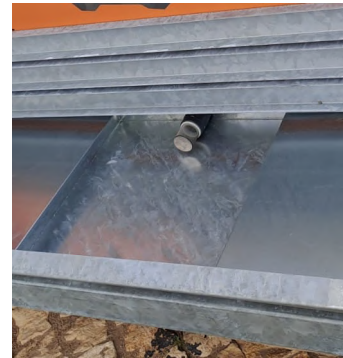


Fig 1- Retention tray with filter.

The BICCleaner is a self-contained bicycle cleaning station designed to provide a convenient and environmentally friendly way to clean bicycles.

Cyclists can use the station to wash and rinse their bicycles effectively, removing dirt, grime, and other debris.

**In heavy use locations, like mountain bike trails, the BICCleaner will need a regular maintenance on the retention tray. We always recommend creating a cleaning plan according to local demand.**

The primary function of the debris trays is to collect dirt, grime, and other debris that is washed off the bicycles during cleaning. If the tray is not cleaned regularly, it will become filled with accumulated debris, reducing their capacity to collect further dirt. This can result in ineffective drainage and potential clogging of the drainage system of the BICCleaner.

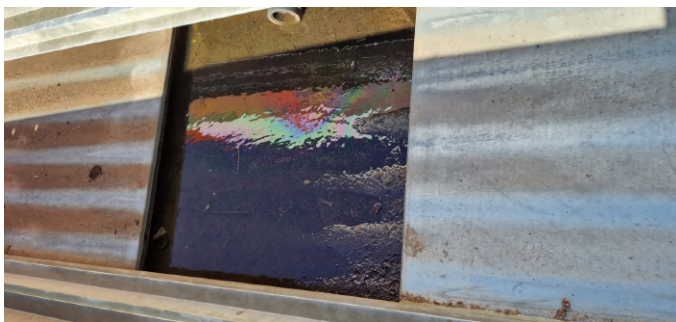


Fig 2- Retention tray with dirt and grime at filter level means that maintenance cleaning is required. (The water level in the retention tray is supposed to be at the filter level)



Fig 3- Retention tray full of dirt and debris. Drainage system of the BICCleaner clogged, lack of maintenance. (The in-built filter prevents clogging of the infrastructure pipes)



Fig 4

### Basic cleaning operations

- Open the 2 metallic draining grates that hold the bicycle during the wash. (Fig 4)
- With a small metal shovel remove all the dirt, grime, and other debris on the retention tray. (Fig 5)
- Once the tray is emptied, rinse them with water to remove any remaining dirt or residue. (Fig 6)



Fig 5



Fig 6