

abriplus



# MOSAİC GUIDE

Dimensions / Cladding options  
Access control / Equipment

MOSAİC

MODULAR & COLLECTIVE SOLUTION  
FOR BIKE SECURING



Protect | Secure | Promote

## ACTIVE MOBILITIES

ABRIPLUS promotes non-motorized mobilities through design, manufacturing and on-site installation of shelters as well as related services.

Its aim is to encourage emission-free travels and to enable the improvement of facilities for bicycles. The creation of secure parking spaces providing comfort to users encourages cycling for daily travels in the long term.

Our shelters are designed to resist to the drawbacks of urban environment, to provide efficiency to users and enable them to secure their bikes with confidence.

## MOSAÏC SHELTER

Easy urban integration & modularity

Designed and manufactured in Nantes, the MOSAÏC bike shelter is an original concept created by ABRIPLUS. Its simple lines and modularity are meant to adapt to any environment. It offers a wide choice of cladding and layout options. Eco-designed, it has been conceived to limit the consumption of raw materials. The MOSAÏC shelter combines all the essential functions of a secure bike park!



Summary / Guide

## SIMPLICITY & MODULARITY

# MOSAÏC

This shelter's strength is its modularity! The wide choice of dimensions, cladding, bike stands and access management systems guarantees the perfect configuration according to needs and environment.

### Interactive summary

Click on the category to get the required page.

1	<b>STRUCTURE &amp; CAPACITY</b>	p.4
	Principle	p.5
	Floor area	p.6
	2 possible heights	p.7
	20 standard configurations	p.8
	Capacity	p.10
	Bike stands	p.11
2	<b>DESIGN &amp; COMFORT</b>	p.12
	Cladding	p.13
	Colour and signage	p.15
	Equipment	p.16
3	<b>ACCESS &amp; ELECTRIC EQUIPMENT</b>	p.17
	Door	p.18
	Access control	p.19
	Lighting and electric installation	p.20
	Solar power supply	p.21
+	<b>ANALYSIS</b>	p.22
	Cladding suggestions	p.23
	Manufacturing	p.26
	Interventions: shipment and on-site delivery	p.27

# MOSAÏC



## STRUCTURE & CAPACITY

Principle

Floor area

2 possible heights

20 standard configurations

Capacity

Bike stands

Structure

PRINCIPLE

To determine the size of your MOSAÏC shelter and therefore its capacity, you must determine 3 interdependent criteria:

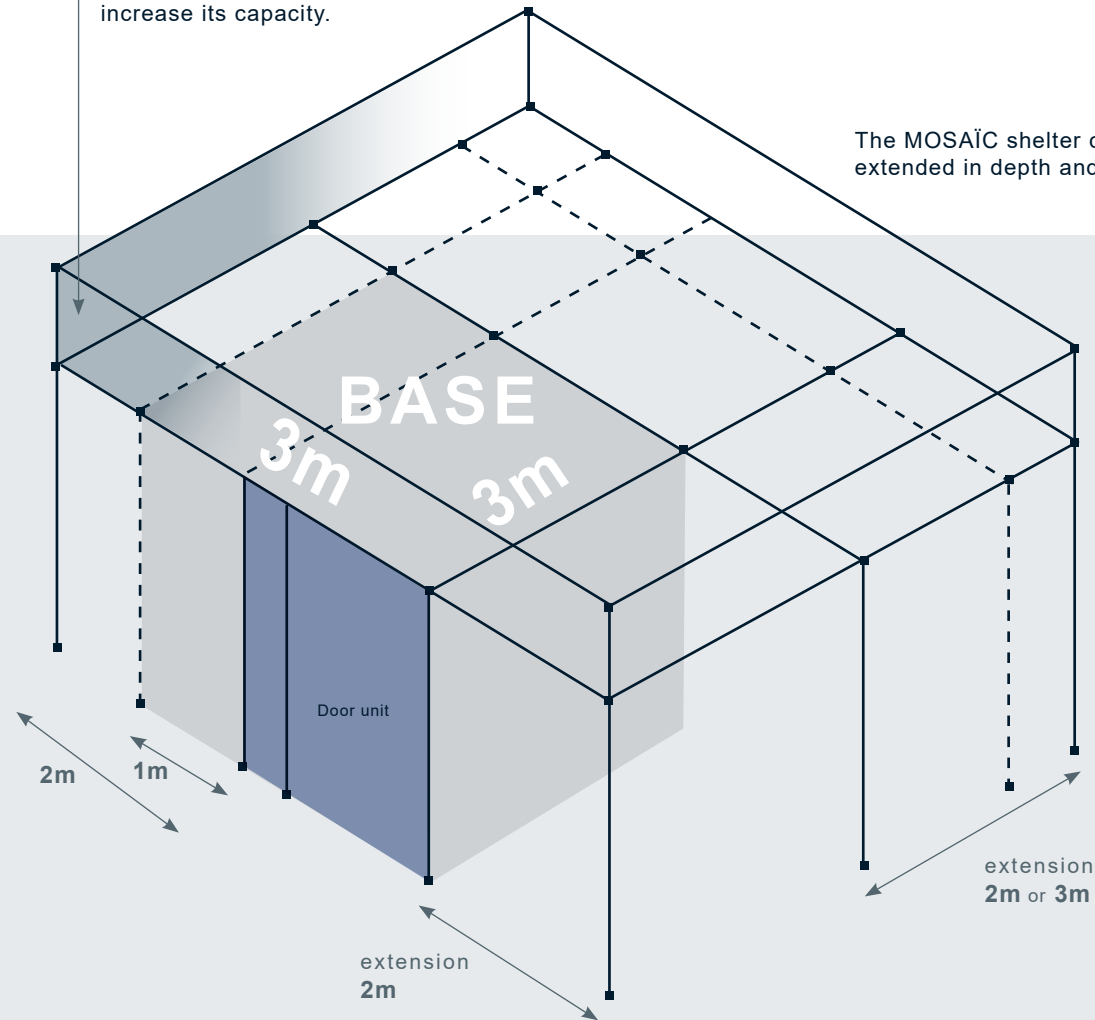
1 - Available floor area

**MOSAÏC**

2 - Number of bicycles

3 - Bike racks

**2 possible roof heights:**  
the highest one (3m) is designed to fit two tier bike racks to increase its capacity.



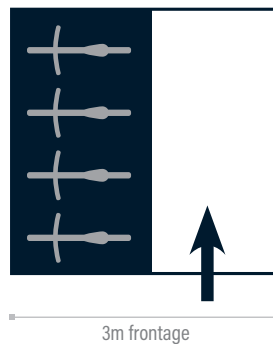
The MOSAÏC shelter can be extended in depth and/or width.

## Dimensions

### FLOOR AREA

The smallest version measures:

3 X 3m



Bike racks  
on one side  
only.



## ADVANTAGE

### SIMPLIFIED STRUCTURE:

On all of the 20 standard sizes, there are no support posts to obstruct with the location of the bike racks.

It can be extended **in depth and width** by sections of:

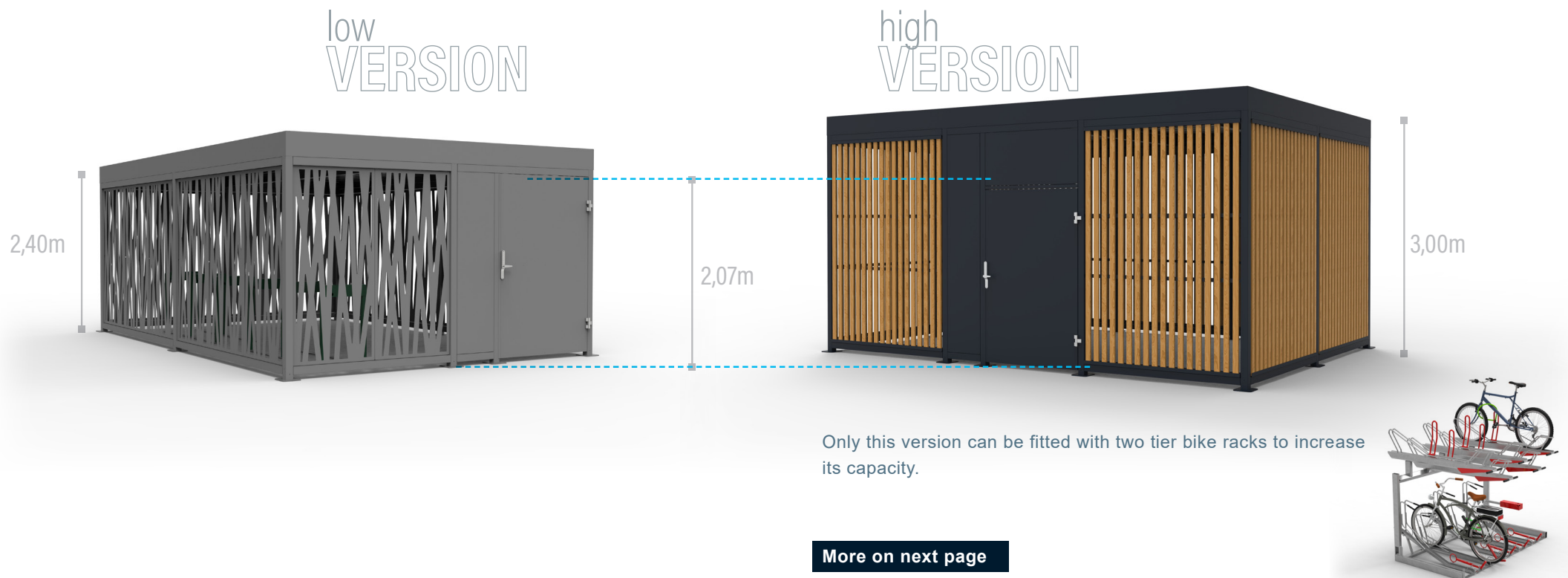
2m or 3m

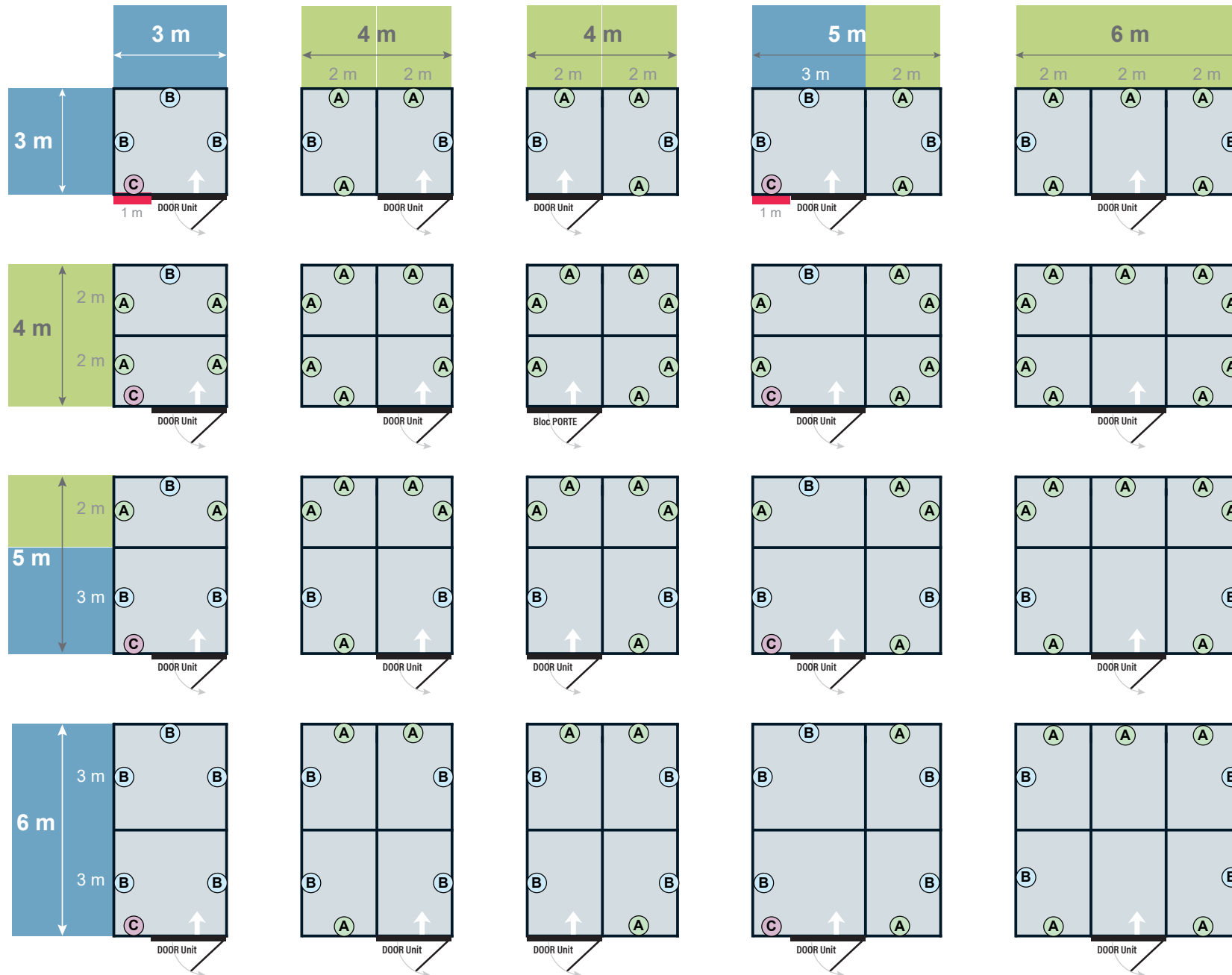


Depending on your available floor area, you can easily determine the size of your shelter.

## POSSIBLE HEIGHTS

The MOSAÏC shelter is available in 2 heights. The highest version can be chosen to increase the bike storage capacity or to anticipate an evolution.





Cladding frames:

A = 2m

B = 3m

C = 1m

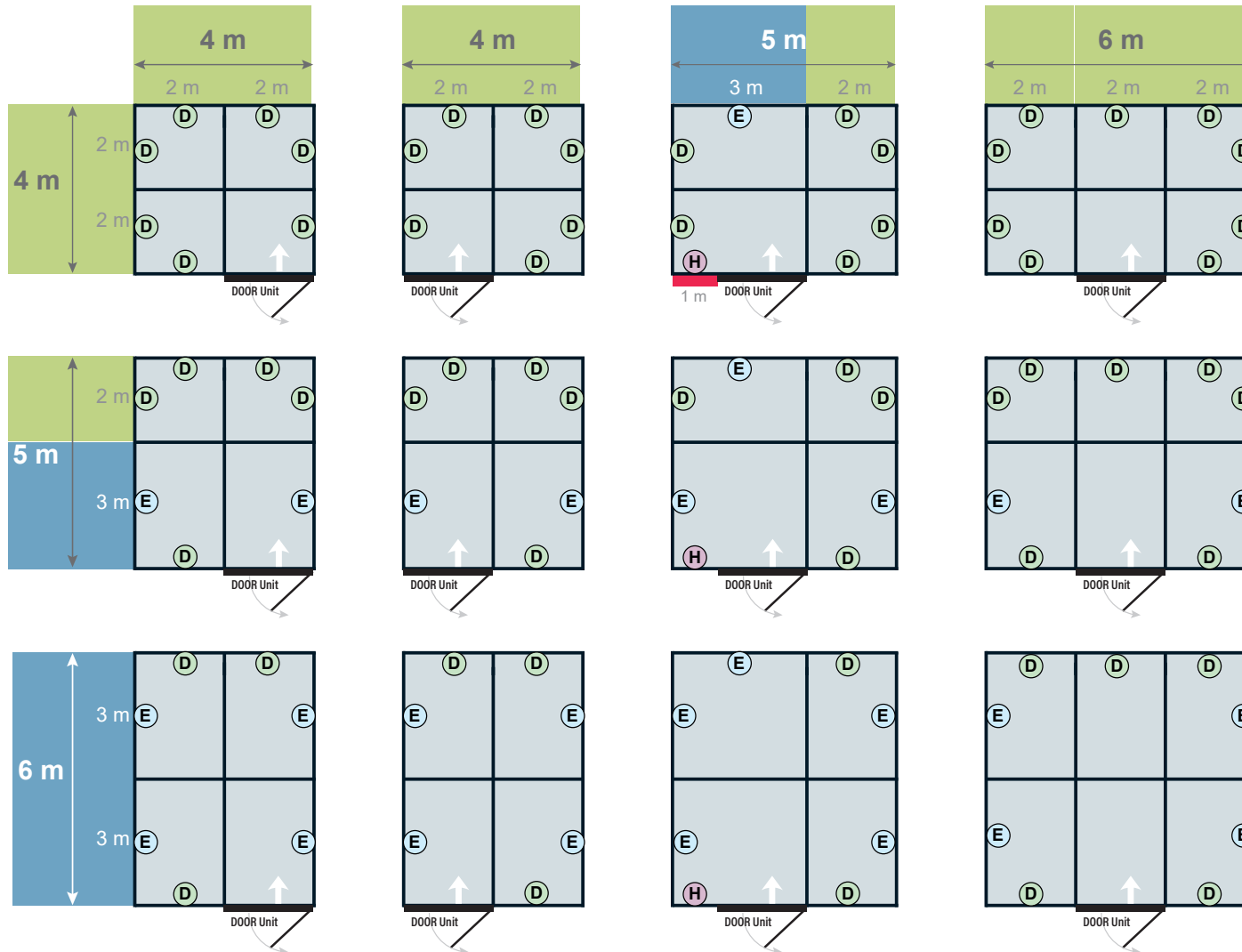


Cladding frames:

ⓓ = 2m

ⓔ = 3m

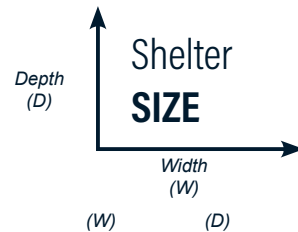
ⓗ = 1m



Dimensions




# BIKE CAPACITY

The shelter's capacity depends on its dimensions and on the choice of bike racks.



**MOSAIC**

(W)	(D)
3,00m	3,00m
3,00m	4,00m
3,00m	6,00m
4,00m	5,00m
4,00m	6,00m
5,00m	6,00m
6,00m	6,00m

Capacity examples <b>depending on bike stands</b>		
Simple bike stand (2 bikes) < CtoC 90cm >	Bike rack < CtoC 35cm >	2 Parkup (2 tier bike rack) < CtoC 40cm >
		
6 bikes	7 bikes	High version not available on these dimensions
8 bikes	10 bikes	
12 bikes	15 bikes	
10 bikes	12 bikes	16 bikes
16 bikes	20 bikes	32 bikes
20 bikes	24 bikes	44 bikes
24 bikes	30 bikes	52 bikes

*For information only, subject to conditions, ask for more information.*

Capacity

# BIKE STANDS

ABRIPLUS offers you a wide choice of bike stands and bike racks to secure bicycles. Your choice will determine the shelter's capacity.

Some examples of our products below:

■ BIKE STANDS:



■ RACKS:



These three racks alternate between top and bottom position, reducing the distance between bikes from 50cm to 35cm.

■ SPECIAL BIKE RACKS:



These two tier bike racks also exist with e-bike charging units.

Two tier bike rack:  
2 PARKUP

Our two tier bike rack is upgradable! It's possible to install the bottom level only and then upgrade as demand grows.



The 2ParkUp system requires a high version of the MOSAIC shelter.



E-bike charging station

Cargo bike stands



Scooter charging station





MOSAÏC

# 2

## DESIGN & COMFORT

Cladding

Colour & Signage

Equipment

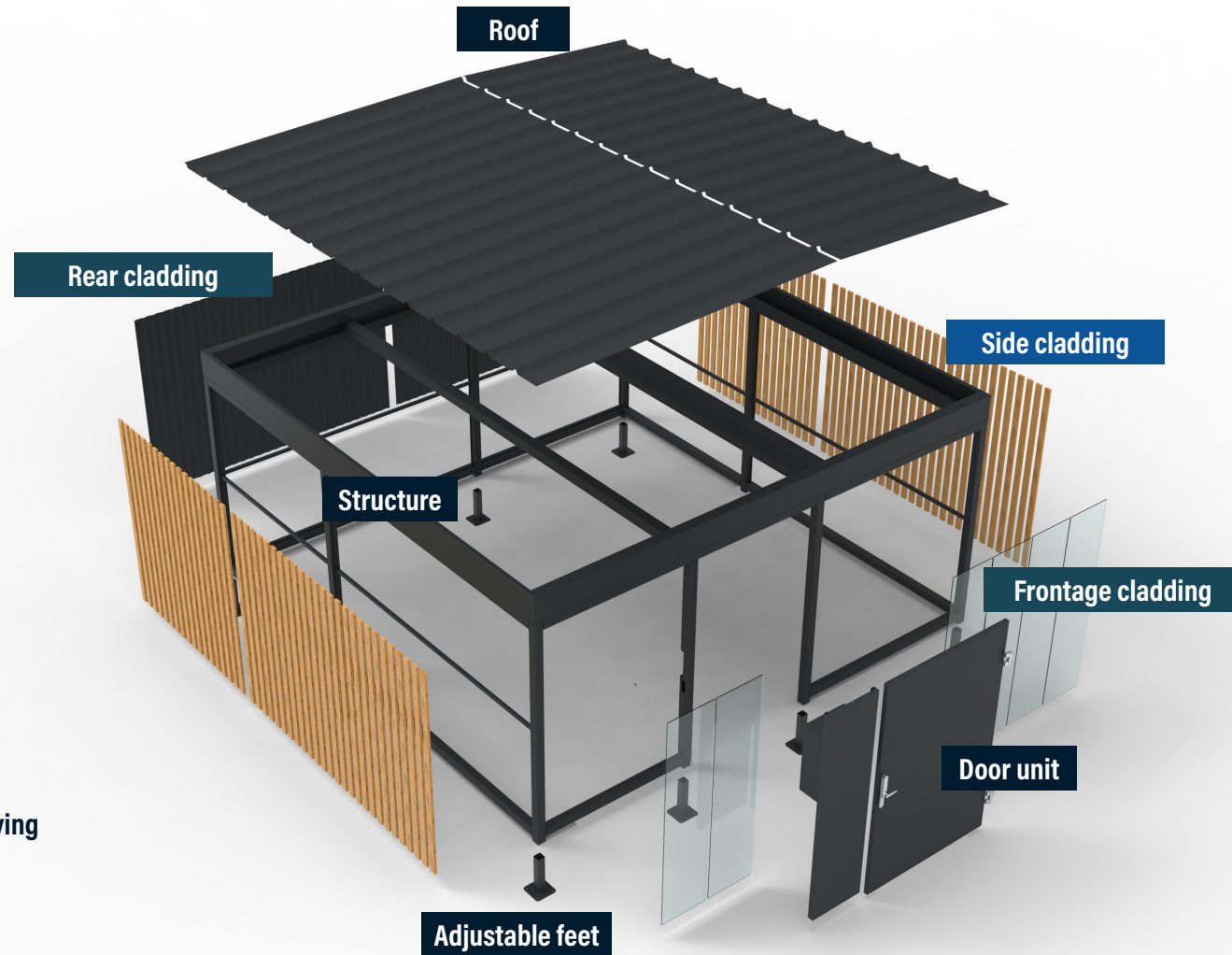
## Cladding

# MODULARITY

One of the advantages of this shelter is its personalization possibilities. We offer 7 different types of cladding (frames) that can be fixed to the structure.

Glass, metal sheet, wood... We can even combine different claddings. These frames can be changed later without any intervention on the structure.

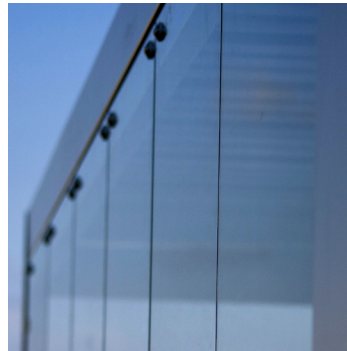
- Cladding frames are independent
- Cladding frames can be replaced without modifying the structure



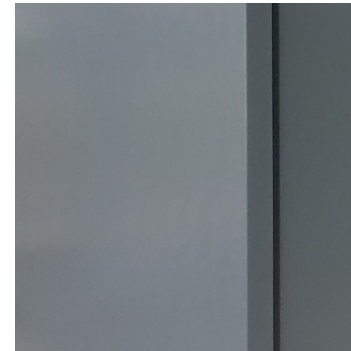
## Cladding

### RANGE

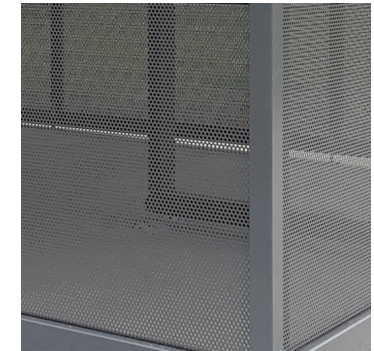
Glass, metal sheet, wood... We offer 7 different cladding options. For aesthetic reasons or cover needs, it is possible to combine different claddings, depending on the side of the shelter.



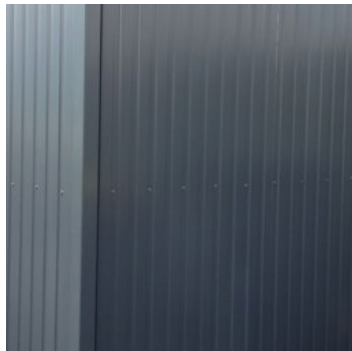
TEMPERED SAFETY GLASS



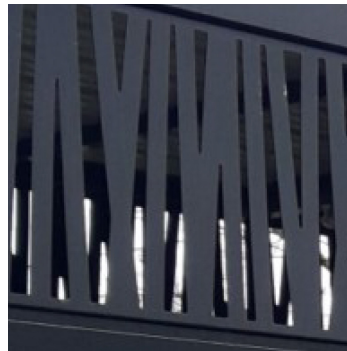
SOLID METAL SHEET



PERFORATED METAL SHEET



METAL SHEET



LASER CUT METAL SHEET  
"ZEBRA"



WOODEN PLANKS



WOODEN BATTENS

## Personalization

# COLOUR & SIGNAGE

In addition to the dimensions and cladding, the shelter can also be customized using adhesive signage or colour. It can be interesting to match with existing street furniture, nearby buildings or your corporate graphic identity.

### ■ COLOUR:

ABRIPLUS has its own paint production facilities. Our products are thermosetting painted and UV-resistant. 184 colors are available at no extra costs in the RAL colour chart.



### ■ ADHESIVE SIGNAGE:

ABRIPLUS can create customized stickers for your bike shelter to help you communicate about your services. You can for example highlight the equipment inside the shelter, inform about the instructions for use, promote active mobility, communicate about the service provider or the local authority...



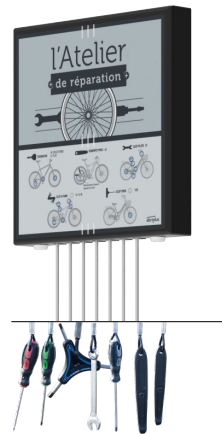
Comfort

ACCESSORIES & EQUIPMENT

For some of these products, we have several references in our range, ask us for more information.



Bike repair station



Wall-mounted bike toolbox



Bike hand pump



Bike inflation station



Lockers



Video protection

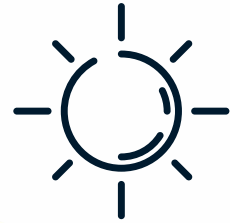


Garbage cans

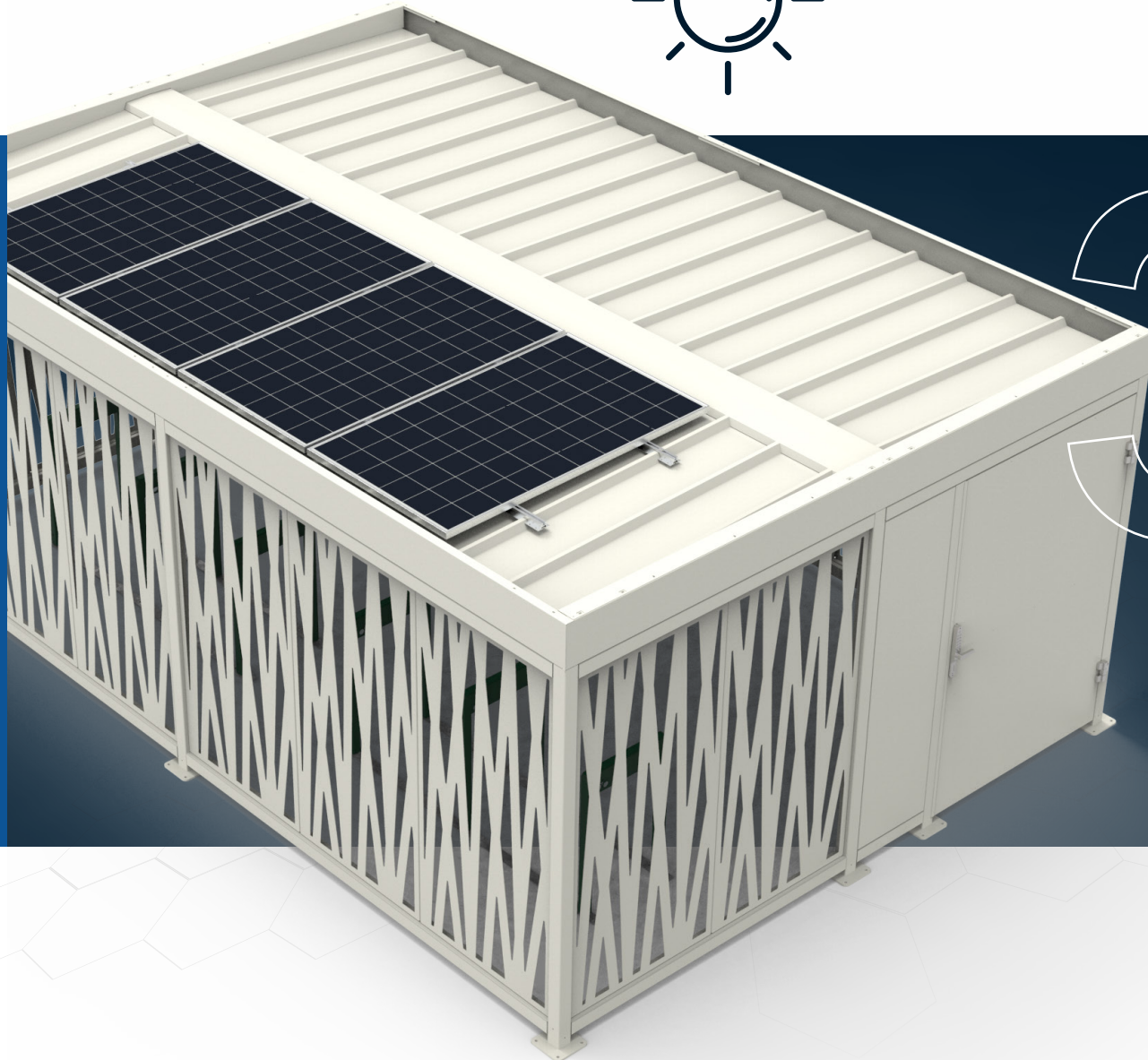


Display panels





# MOSAIC



# 3

## ACCESS & ELECTRIC EQUIPMENT

Door

Access control

Lighting and electric installation

Solar power supply

## Entrance

# THE DOOR UNIT

The door unit is composed of a right-handed hinged door and a 50cm wide steel panel on the left. The aim of the steel panel is to integrate the electrical panel or any other technical component. The whole width is therefore 200cm, including a 130cm passage width.

### ■ FRAMED DOOR:

- Frame in 40x40x2mm steel tube
- 50cm steel panel on the left side of the door
- Mechanical panic bar
- Locking by key - *europa cylinder* -
- Door locker
- Solid metal sheet door cladding covering the welded tubular frame

### ■ AS AN OPTION:

- Access management:  
600x400x250 electrical box required  
Electric strike + mechanical panic bar
- Other access:  
Mechanical keypad  
RFID lock "IWAF"



*Door unit &  
indoor electric box*



*Mechanical panic bar, door locker  
and emergency lighting*



## Door and badge reader

### ACCESS MANAGEMENT (OPTION):

If you choose the badge reader for your access management, the door is adapted to work with a card validator. The badge reader is recessed into the frontage of the shelter.

CONTROLS



USER



TIME



CALENDAR



MANAGER



ELECTRONIC



ADVANCED

## Access control

# KEYS, KEYPAD & BADGES

Further information: contact our sales department.

We offer several facilities and services:

- Keys, keypads, badge readers...
- Subscription offers management: short or long term
- Compatible with all types of transport badges

We can supply the access management system, subject to detailed functional specifications.

**We recommend that you keep a single supplier for your access management on all your shelters and parkings** and therefore to choose a solution that can be adapted to all your bicycle shelters.

### Mechanical keypad



A unique code opens the door

### Proximity reader with badge



The shelter's door opens with the badge

### RFID connection reader

Compatible with transport badges and smartphones



The shelter's door opens with transport card or smartphone



## diwio®

DIWIO is a bike parking access management system which can be installed on all kind of secure shelters. It has been conceived to remotely control all your needs: short or long term, occasional or regular, residential... Compatible with transport badges and accessible with a smartphone, Diwio is made to manage individual access from a supervision platform and a personalized website for users.

## Technical options

# LIGHTING, SAFETY & ELECTRICAL BOX

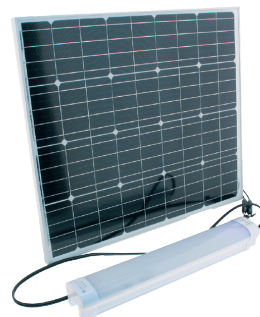
### ■ LIGHTING

As an option, all our shelters can be fitted with roof-fixed LED lighting units, linked to a presence sensor.

- Waterproof LED light
- Standard neon power 19W
- IP65
- Length: 1260mm
- Presence sensor lighting

### ■ SOLAR LIGHTING

- LED spotlight 1500 Lumens
- Solar panel 50W  
Lithium 144WH - 12V
- Autonomy 12h
- Detection 10m
- Protection IP67
- Panel weight 7kg



### ■ ELECTRICAL BOX

Metal electric panel 600x400x250mm, with fixing brackets + cable gland plate for control and protection of:

- 30 mA two-pole differential protection
- 10A circuit breaker, 230 VAC for lighting circuit
- 10A circuit breaker, 230 VAC for emergency lighting
- Emergency lighting unit EATON TL500
- 16A circuit breaker, 230 VAC + modular plug on panel
- Terminal block

#### OPTION

- 16A plug outlet for e-bike, 230 VAC on terminal for 5 e-bikes plugs max with terminal block
- Electric strike for badge reader
  - > 10A circuit breaker 230VAC + 12VDC power supply for access control
  - > Access control with timer, electric strike terminal
  - > 10A circuit breaker 230VAC + 12VDC power supply for badge reader

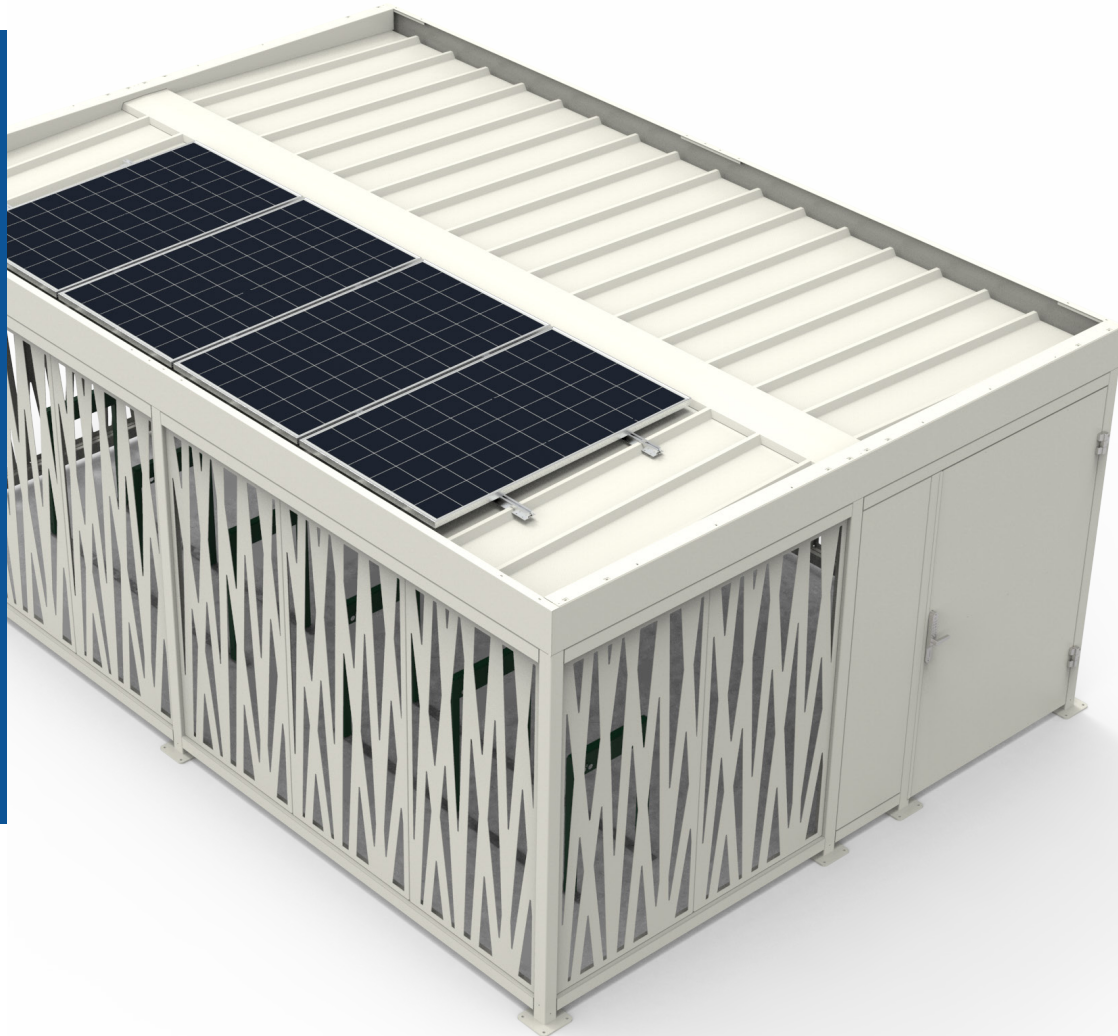
### ■ SAFETY

- Non-flammable cladding materials
- Emergency lighting unit



Solar power supply

## COMPLETE AUTONOMY



### ■ COMPLETE ELECTRIC AUTONOMY

Abriplus offers photovoltaic panels on the roof (3 or 4 panels maximum, depending on the size of the shelter) to supply power to the MOSAÏC autonomously for essential functions:

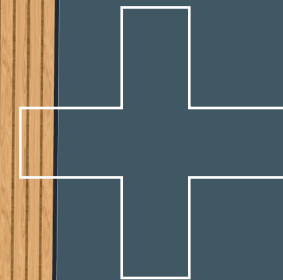
- lighting
- access control
- e-bikes charging (depends on season and location)

Designed to save space, the electrical box for the solar power supply will be placed in the door unit.



*The solar pack reduces the capacity of the shelter by a minimum of one bike stand to allow the installation of a battery storage bench.*

# MOSAÏC



## ANALYSIS

Configuration suggestions:  
claddings and dimensions

Manufacturing

Interventions

Examples

CLADDING & DIMENSIONS

low  
VERSION



3m frontage x 4m depth  
'ZEBRA' cladding



3m frontage x 6m depth  
Wooden planks cladding



3m frontage x 3m depth  
Metal sheet cladding



4m frontage x 3m depth  
Tempered safety glass cladding



4m frontage x 6m depth  
'ZEBRA' cladding



4m frontage x 4m depth  
Solid metal sheet cladding

Examples

CLADDING & DIMENSIONS

low  
VERSION



**6m** frontage x **5m** depth  
Perforated metal sheet cladding



**6m** frontage x **4m** depth  
Wooden battens cladding



**5m** frontage x **4m** depth  
Perforated metal sheet cladding



**5m** frontage x **5m** depth  
Tempered safety glass frontage  
Wooden battens cladding on the sides  
Solid metal sheet cladding on the backside



**6m** frontage x **3m** depth  
Wooden planks cladding frontage and backside  
Perforated metal sheet on the sides



**6m** frontage x **6m** depth  
Perforated metal sheet frontage and backside  
Wooden battens cladding on the sides



## Examples

## CLADDING &amp; DIMENSIONS

high  
VERSION

**4m** frontage x **6m** depth  
Tempered safety glass  
and perforated metal sheet cladding



**4m** frontage x **5m** depth  
Perforated metal sheet cladding



**4m** frontage x **5m** depth  
Wooden battens cladding



**4m** frontage x **6m** depth  
'Zebra' cladding frontage and backside  
Perforated metal sheet cladding on the sides



**6m** frontage x **4m** depth  
Wooden battens cladding



**6m** frontage x **4m** depth  
Tempered safety glass cladding frontage  
Perforated metal sheet cladding on the sides  
Metal sheet cladding on the backside

French manufacturing

## RELIABILITY & RESISTANCE



### CONSTRUCTION

- Frame composed of galvanized steel tube
- Roof crossbar: 120x80x4mm
- Roof reinforcement crossbar: 100x100x3mm
- Posts and crossbars: 80x80x3mm
- Gutters capturing rainwater in the posts
- Adjustable feet on 200x200x10mm plates
- Screws made of class-A2 stainless steel

### ROOF

- HACIERCO 3.333.39 T metal sheet, painted with one of the 5 predefined colours ( RAL 1015 – 5008 – 6011 – 7016 – 8012)

### ■ FINISH

- Polyester thermosetting paint, heated at 200°C, UV-resistant
- Colour to be chosen within the RAL colour chart

### ■ CLADDING

Claddings to be chosen in our range.

[Go to page 'cladding'](#)

### ■ FIXING

Fixing by M12/65 anchoring screws on concrete slab or concrete blocks.

[abri-plus.com](http://abri-plus.com)

## Intervention

# SHIPMENT, INSTALLATION & AFTER SALES



### ■ SHIPMENT

The shelter is shipped in parts for on-site installation. No special convoys are required for this shipment.

### ■ INSTALLATION

**ABRIPLUS is in charge of the on-site installation of the shelter.**

In order to ensure a maximum level of resistance and reliability of the frame, the shelter must be fixed on concrete slab that is at least 200mm thick (at your expense) on which will be fixed the feet of the frame. These are adjustable feet that can compensate a 10cm level difference between opposite points. The drilled plates enable the fixation of each foot by chemical resin and threaded shanks.



### ■ WARRANTY / AFTER SALES

In case of accident or vandalism, the damaged parts can be replaced.

Our shelters are designed to make the replacement of these parts be easy. Our shelters can be completely dismantled and all their components can be provided by our after-sales department. We guarantee the availability of these parts during the whole life of the product.

*Our shelters do not require any specific maintenance, except high-pressure washing.*

**All our shelters are guaranteed during 5 years, except in case of vandalism, accident or storm (wind > 130 km/h).**

Our others secure bike shelters:

K O M P A C T



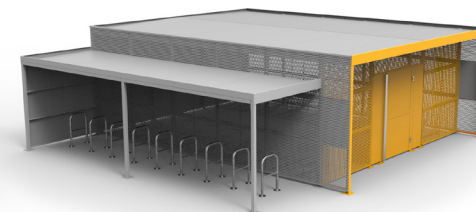
N O M A D



M O D U L ' E R E



S Q U A R E +



**abriplus**

31, rue de l'Industrie  
44310 St-Philbert-de-Grand-Lieu

Tel. +33 240 780 808

[abri-plus.com](http://abri-plus.com)