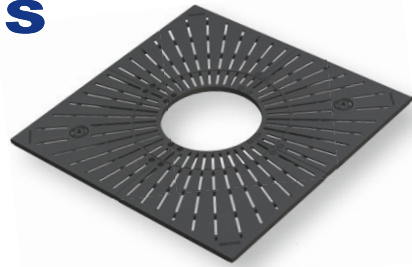




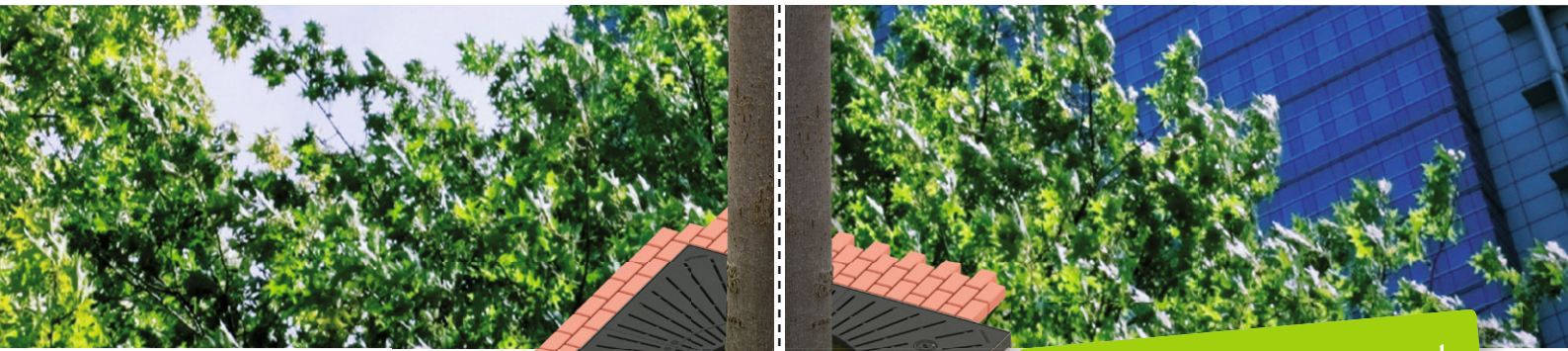
## CLASSICO®

Tree protection system 2.0

*grows with the task...*



- self-supporting, loadable up to 50 kN without substructure
- internal/tree opening: Ø 700 mm can be extended to Ø 1,100 mm
- low subsequent costs, grows with the task, long-term usable
- more free space for the tree



*Complete development  
for the whole tree!*

Tree-planting today  
(standard trunk opening Ø 700 mm)

→ 20 years later  
(extended trunk opening Ø 1,100 mm)

**Grows with the task:** The internal diameter can be extended from 700 mm to 1,100 mm by simple grinding off at the intended cutting points (except 1,250 x 1,250 mm und Ø 1,500 mm).



**Loading:** All tree gratings from standard 2.0 are designed to be self-supporting for wheel loads of up to 50 kN (LKW SLW 30 in traffic-reduced zones). Optimised construction and appropriately loadable segment connections ensure that no additional steel substructure is required. This construction enables the planting trench to be free of irritating profiles and work in the planting trench is not obstructed.

**Segment connection:** The four individual segments are connected to form a statically self-supporting (from external support) tree grating using patented connecting engineering. The structural shape and the selectable tightening torque guarantee adaptation to the surrounding area in both location and height.



**Coating:**

Standard (delivery at short notice):

- 2 K-EP zinc primer + Hydro dipping paint similar to RAL 9005 – 9011
- Cast iron in unfinished state (natural), Surface cut wire-blasted.



Other high-quality coatings (on request):

- KTL – cathodic dipping paint (black RAL 9011, slight gloss)
- KTL + powder coating in RAL or DB – colour to customer requirement



**Lighting technology – ground floodlight** (on request): All tree gratings (except 1,250 x 1,250 mm and Ø 1,500 mm) can be fitted with on-site BEGA ground floodlights in order to increase the attraction of the tree location. The factory-made openings ensure clean and surface-flush fitting. We recommend the BEGA 7107 floodlight (Ø 245 mm) or equivalent variations.



# CLASSICO® 2.0 – Sizes | Technology | Accessories

① **Cast iron tree grating** – self-supporting due to statically loadable segment connections incl. supply openings with secured cover.

② **Steel frame**

This frame is only used as a bordering template for delimiting the surrounding pavement.

The tree grating can also be used without frames if the foundation is suitable.

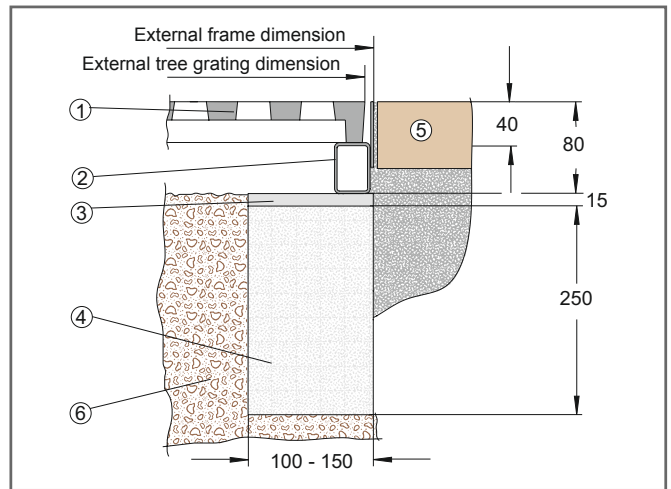
③ **Compensation layers** (optional) – for height adjustment made of pressure-resistant mortar.

④ **Concrete foundation** – factory-made precast concrete segment, 1, 2 or 4-piece, width 150 mm, optional on-site solution e.g. with deep borders 10/30 or as shuttered concrete foundation etc.

⑤ **Surrounding covering** – paving, asphalt covering or similar.

⑥ **Plant/tree substrate** – in acc. w. FLL (Forschungsgesellschaft Landschaftsentwicklung Landschaftsbau e.V.) or ZTV-Vectra-MÜ. The road construction substrate, which is compactable or non-compactable in accordance with the trafficked services, guarantee nutrient provision in the root area and are therefore an important component of a tree-planting system.

⑦ **Tree protection grating** (not illustrated) – installation height 1,800 mm – The standard „LIGERO“ type is generally supplied including a fixing set for height and inclination-adjustable mounting. Further versions from our extended standard program are available, or can be custom-made.



System dimension		Cast iron tree grating		Steel frame Install. height = 80 mm		Concrete foundation Install. height = 250 mm	
External (mm)	Internal (mm)	Item No.	Weight (kg)	Item No.	Weight (kg)	Item No.	Weight (kg)
1,250 x 1,250	∅ 600	CLQ 12560*	158	ARQ1250	29	BFQ12525	358
1,500 x 1,500	∅ 700 (1,100)	CLQ 15070	226	ARQ1500	34	BFQ15025	428
1,800 x 1,800	∅ 700 (1,100)	CLQ 18070	358	ARQ1800	40	BFQ18025	505
2,000 x 2,000	∅ 700 (1,100)	CLQ 20070	418	ARQ2000	44	BFQ20025	574
∅ 1,500	∅ 700	CLK 15070 *	165	ARK1500	26	BFK15025	350
∅ 2,000	∅ 700 (1,100)	CLK 20070	329	ARK2000	34	BFK20025	453

\*Cast tree grating does not grow with the task and is only available without lighting segment.

“Ligero“ steel tree protection grating   trunk foot ∅ 700 mm   installation height 1,800 mm   weight approx. 33 kg		
Hot-dip galvanized	Galvanised and powder-coated RAL 9005-9011	Galvanised and powder-coated to customer requirement
Item No. BG1700V	Item No. BG1700R	Item No. BG1700S

All listed standard sizes available at short notice. Storage stocks and delivery periods for foundations on request.

**MeierGuss Sales & Logistics GmbH & Co. KG**

Auf der Welle 5-7 | 32369 Rahden | Germany  
Tel.: +49 5771 918-0 | Fax: +49 5771 918-218

**Limburg office**

Elzer Straße 23-25 | 65556 Limburg | Germany  
Tel.: +49 6431 291-0 | Fax: +49 6431 291-168

You can find all our contact data in the Internet

at: [www.meierguss.de](http://www.meierguss.de)

